

Children's Network of SWFL

Enhancements to the Child Welfare System of Care based on New Core funding:

Increase to Foster parent Board rate effective 7-1-2015 (COLA) at annual cost of \$110,399

Age	Monthly Amount
0-5	\$450
6-12	\$462
13-17	\$615

Effective October 1<sup>st</sup>, 2015:

Increased starting salary of Case Managers from \$34,000 to \$38,000 per year

Increased Starting salary of Case Manager Supervisor from \$43,000 to \$47,000 per year

Addition of 16 Case Managers, 3 Case Manager Supervisors, and 2 Clerical staff

Increased Diversion services and In Home Services

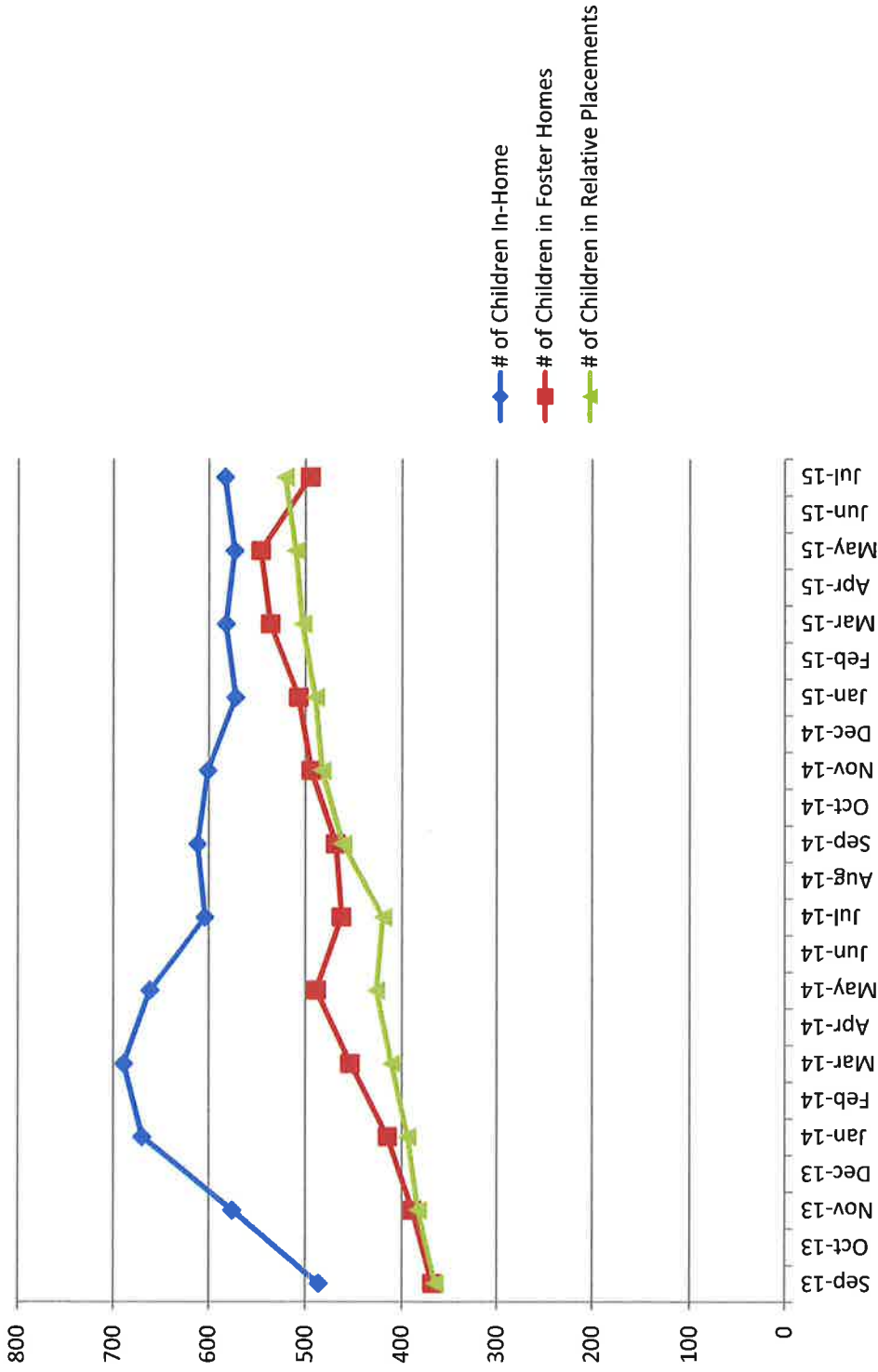
Increased Evidenced Informed Supervised Visitation Resources (ABC Visitation program)

Increased Evidenced Based Parenting and Nurturing Programs

3% increase for all Case Management Organization and Children's Network staff > 1 year of service

# Children's Network of SWFL

## Number of Children Receiving In-Home and Family-Based Foster Care

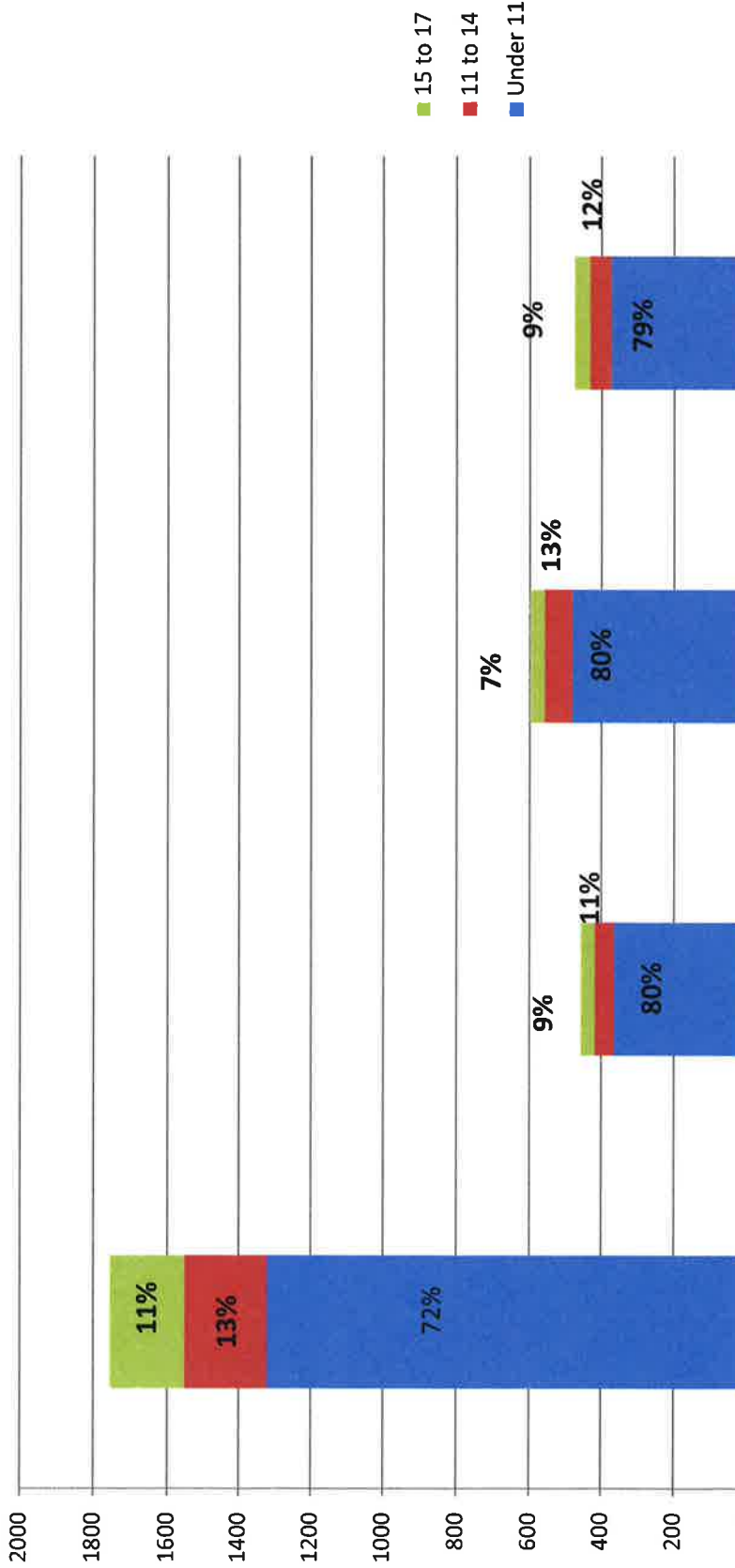


# of Children In-Home

# of Children in Foster Homes

# of Children in Relative Placements

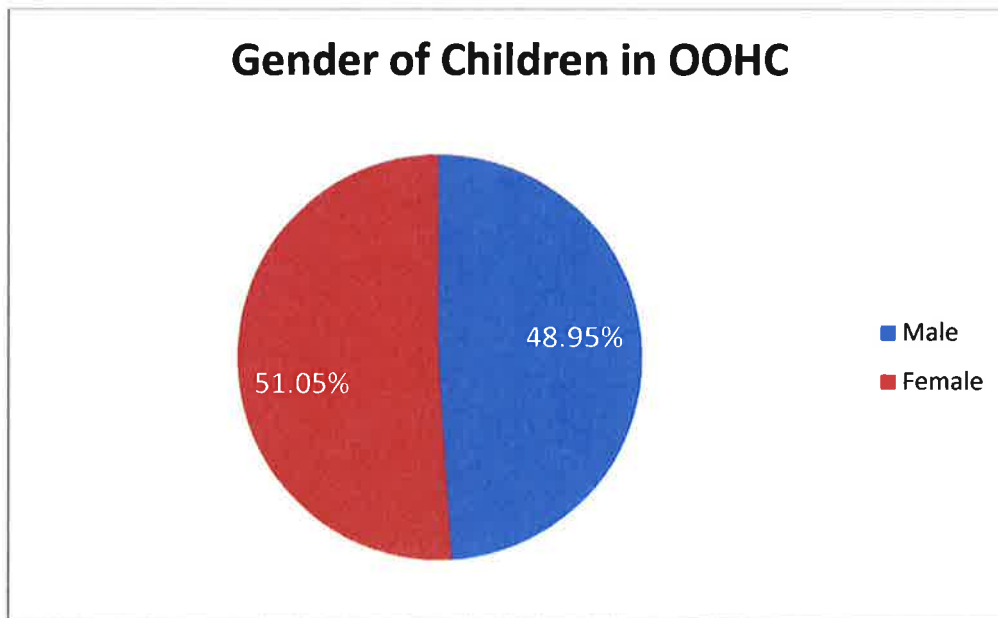
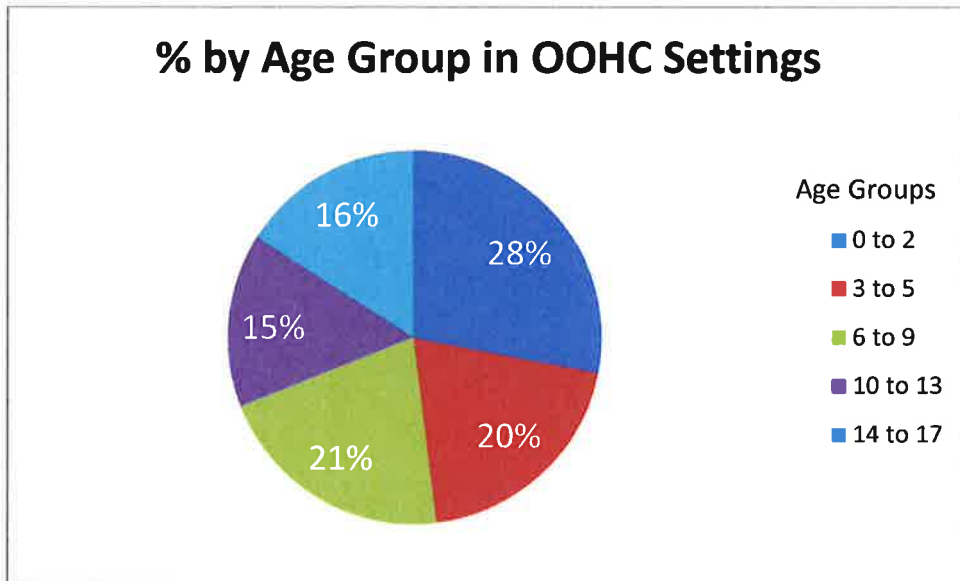
## Children's Network of SWFL Children In-Home & Family-Based Foster Care



Age Group	Total # Children in Care (1838)	Total # Children In-Home (457)	Total # of Children With Relative/Non-Relatives (597)	Total # of Children in Foster Homes (475)
15 to 17	202	39	40	44
11 to 14	232	52	76	58
Under 11	1320	365	481	373

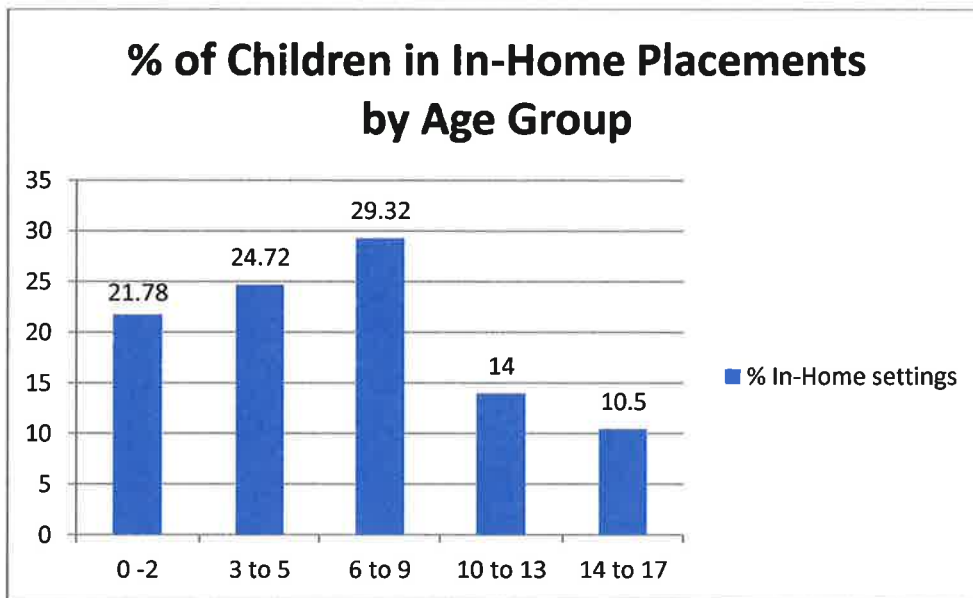
# Children's Network of SWFL 2015

## Demographics of Children Receiving In-Home and Out-of-Home Services:

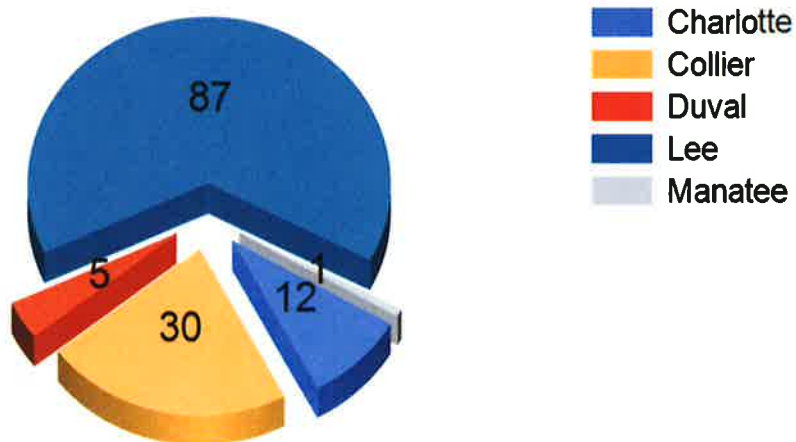


**Race/Ethnicity:**

○ White:	82.75%	Statewide: 68.72%
○ Black:	22.79%	Statewide: 34.09%
○ Other:	2.11%	Statewide: 2.28%
○ Hispanic Ethnicity :	0.78%	Statewide: 0.94%



### Children Served By Diversion



**Number of Foster Homes and Bed Capacity by County:**

County	Foster Homes	Bed Capacity
Lee	175	366
Collier	44	90
Charlotte	40	84
Hendry	16	46
Total	275	586

**Foster Home Bed Capacity in Circuit 20**



**# of Foster Homes in Circuit 20**

