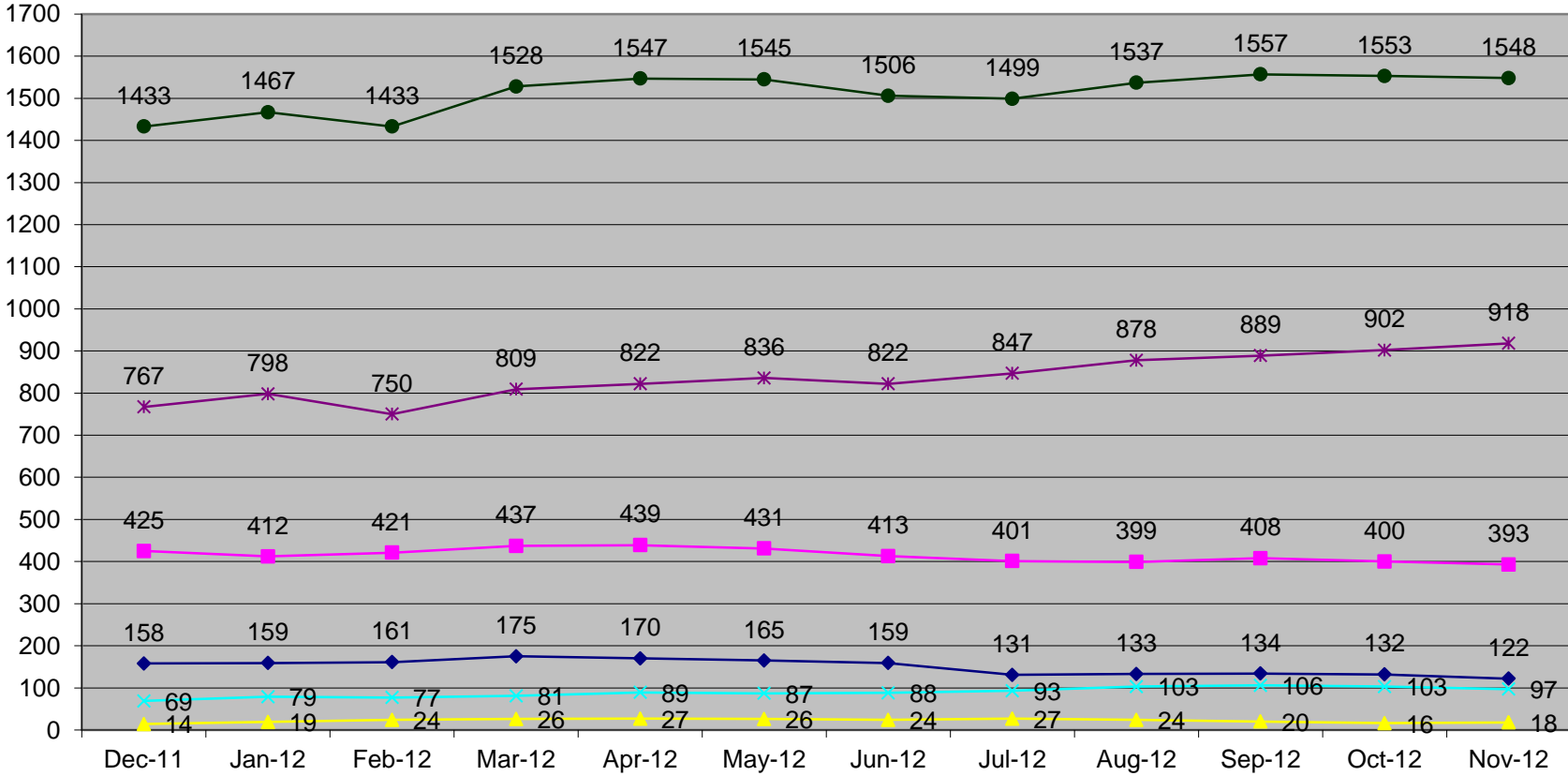
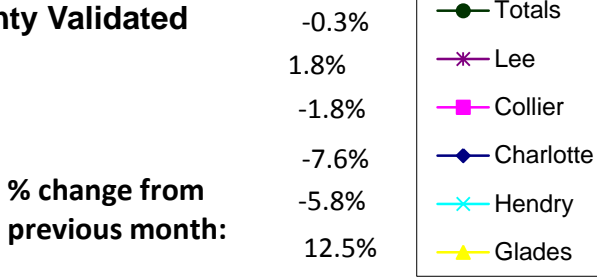
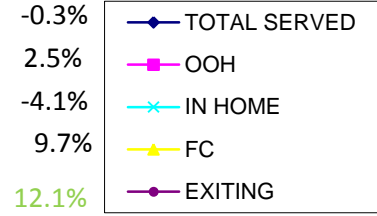


Childrens Network of SW Florida		CBC Contract Performance Measures FY 12-13											6/30/2013 Target	
Performance Measure (2012/2013 targets)		Jul 12	Aug 12	Sept 12	Oct 12	Nov 12	Dec 12	Jan 13	Feb 13	Mar 13	Apr 13	May 13	Jun 13	
FS106	1) The % of children served in out-of-home care who are not maltreated by their out-of-home caregiver shall be at least 99.68%. (quarterly)			99.74%										99.68%
FS107	2) The % of children under supervision who are required to be seen each month who are seen each month shall be at least 100%. (monthly)	100.00%	99.93%	99.73%	100.00%	100.00%								100%
FS301 C1.1	3) The % of children reunified who were reunified within 12 months of the latest removal shall be at least 75.2%. (ytd/quarterly)			68.75%										75.2%
FS302 C1.4	4) The % of children reunified who re-entered out-of-home care within 12 months shall not exceed 9.9%. (ytd/quarterly)			16.67%										9.9%
FS303 C2.1	5) The % of children who were adopted who were adopted within 24 months of the latest removal shall be at least 36.6%.(ytd/quarterly)			25.00%										36.6%
FS671 C3.1	6) The % of children in out-of-home care 24 months or longer on July 1 who achieved permanency prior to their 18th birthday and by June 30 shall be at least 29.1%. (ytd/quarterly) (cumulative/pro-rated across the fiscal year)			13.07%										29.1%
FS306 C4.1	7) The % of children in out-of-home care for at least eight days, but less than 12 months, who had two or fewer placement settings, shall be at least 86%. (ytd/quarterly)			86.45%										86%
FS304	8) The number of children with finalized adoptions between July 1, 2011 and June 30, 2012 shall be at least 109 (monthly)	5 ytd	21 ytd	26 ytd	34 ytd	53 ytd								TBD
FS773	9) The % of children under supervision who are required to be seen every 30 days, who are seen every 30 days shall be at least 99.5% green/98.9% red. (monthly)	98.44%	99.00%	99.69%	99.71%	99.85%								99.50%
<b>Additional Strategic Planning Measures</b>														
FS108	The average number of children who are missing per 1000 children in home and out-of-home care will not exceed 10. (monthly)	5.69	4.90	3.80	5.32	6.81								TBD
Data Source: DCF Dashboard, DCF Federal Performance Measure Quarterly report & FSN														
Shading is based on comparisons to 2004 national data, using median and either 25 <sup>th</sup> percentile (where lower is better) or 75 <sup>th</sup> percentile (where higher is better).														
Cells are shaded green if the performance is better than the desired 25 <sup>th</sup> /75 <sup>th</sup> percentile. * Note: Measures 3.1 tracks performance for a cohort of children across the Fiscal Year.														
		FEE DCF	range:	range:	range:									
		C1. FS301	< 69.9%		>= 75.2%									
		C1. FS302	> 15%		<= 9.9%									
		C2. FS303	< 26.8%		>= 36.6%									
		C3. FS671	< 25%		>= 29.1%									(FY CUMMULATIVE/PRORATED)
		C4. FS306	< 83.3%		>= 86%									

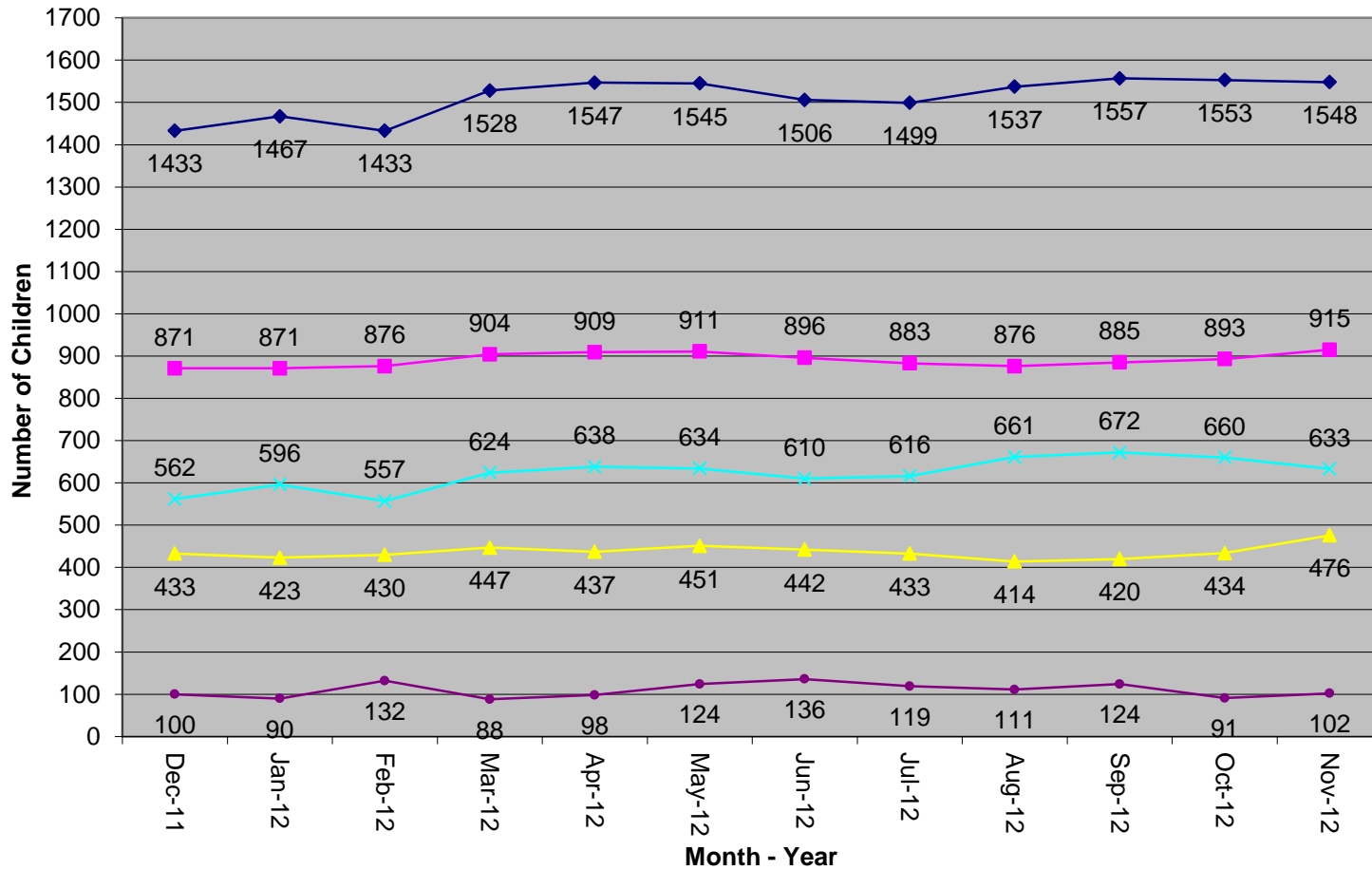
### CNSF Children in Care By County Validated FY 12 - 13



### Childrens Network of Southwest Florida Validated Children in Care Totals FY 12 - 13



**% change from  
previous month:**



<b>Childrens Network of SW Florida</b>							
<b>Board Level Monthly Report as of 11/30/2012</b>							
<b>source: FSFN</b>							
	charlotte	collier	glades	hendry	lee	totals	ICPC children (included in totals)
<b>TOTAL CHILDREN SERVED</b>	122	393	18	97	918	1548	13
	charlotte	collier	glades	hendry	lee	totals	
<b>TOTAL CHILDREN IN OUT OF HOME CARE:</b>	85	213	14	38	565	915	
relative/non-relative	31	111	9	33	255	439	
foster care	54	102	5	5	310	476	
	charlotte	collier	glades	hendry	lee	totals	
<b>TOTAL CHILDREN IN HOME CARE:</b>	37	180	4	59	353	633	
	charlotte	collier	glades	hendry	lee	totals	
<b>NEW TO CARE THIS MONTH (EST)</b>	6	16	2	7	66	97	
	charlotte	collier	glades	hendry	lee	totals	
<b>CHILDREN EXITING CARE THIS MONTH (EST)</b>	14	23	0	12	53	102	
	charlotte	collier	glades	hendry	lee	totals	
<b>ADOPTIONS, REUNIFICATION, ABUSE/NEGLECT</b>	charlotte	collier	glades	hendry	lee	totals	
children available for adoption	na	na	na	na	na	126	
adoption finalizations this month	2	8	0	0	9	19	
adoption finalizations ytd	3	22	0	0	28	53	
children reunified this month	3	2	0	0	5	10	
reports of abuse or neglect this month	165	300	inc in Hendry	25	704	1194	
	0-6	6-12	12-18	18-24	24+	totals	
<b>MONTHS IN CARE (#)</b>	394	378	287	142	347	1548	
<b>MONTHS IN CARE (% of total children in care)</b>	25.45%	24.42%	18.54%	9.17%	22.42%		

AS OF: 11/30/2012		ALLOCATED VS FILLED CASE CARRYING POSITIONS					
<b>PRIMARY D8 COUNT BY COUNTY (ALLOCATED CASE CARRYING CWCM)</b>							
County	Clients	Allocated CWCMs	avg per allocated CWCM				
Charlotte	122	9	13.56				
Collier	393	25	15.72				
Hendry/Glades	115	4	28.75				
Lee	918	46	19.96				
Total	1548	84	18.43				
<b>PRIMARY D8 COUNT BY COUNTY (FILLED CASE CARRYING POSITIONS)</b>							
County	Clients	Filled Case Carrying Positions	avg per filled position	Hired/InTraining	Unfilled		
Charlotte	122	8	15.25	1	0		
Collier	393	23	17.09	0	2		
Hendry/Glades	115	4	28.75	0	0		
Lee	918	42	21.86	3	1		
Total	1548	77	20.10	4	3		
<b>Cummulative:</b>							
Clients	Filled Case Carrying Positions	avg per filled position	Hired/InTraining	Unfilled			
FPS	508	27	18.81	0	2		
LSF	1040	50	20.80	4	1		